

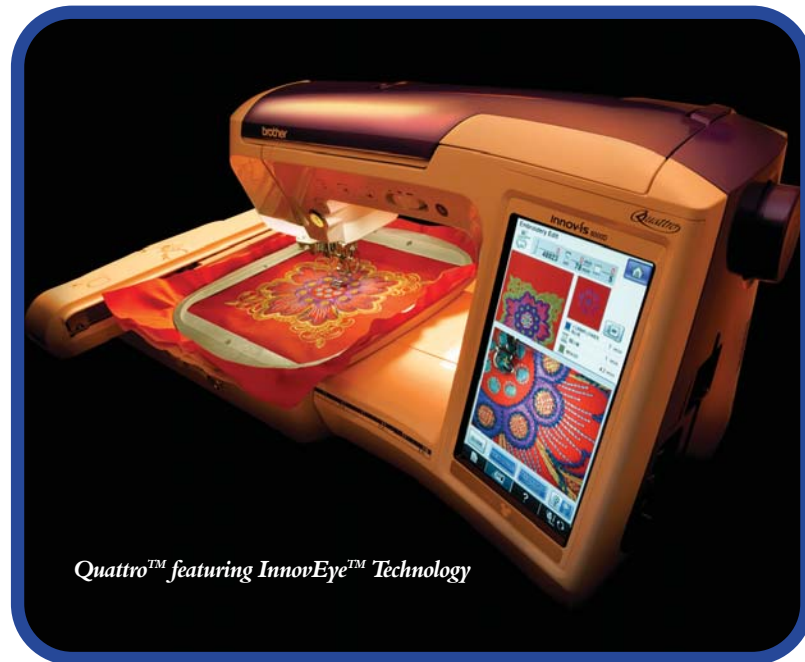
Brother International Corporation

Redefining Industry Standards with the New Brother Quattro™ 6000D

For more information, visit www.brother.com **brother**[®]
at your side

Setting new standards, Brother International Corporation introduced the groundbreaking Quattro™ 6000D sewing, embroidery, quilting and crafting machine during a memorable debut on August 9, 2008. More than 500 dealer attendees and guests including staff from Japan, Canada, Australia, Mexico, Colombia, Costa Rica, Ecuador, Guatemala and Venezuela attended the company's recent Back to Business conference in Las Vegas to celebrate the machine's unveiling.

Designed to take craft and creativity beyond users' wildest dreams, the Quattro™ sets new, verifiable industry standards with nearly 50 square inches of work space, Runway™ Lighting, Exclusive InnovEye™ Technology and Up-close™ Viewer, wide-angle HD LCD display by Sharp Corporation and Print and Stitch™ Technology for the ultimate crafting experience.

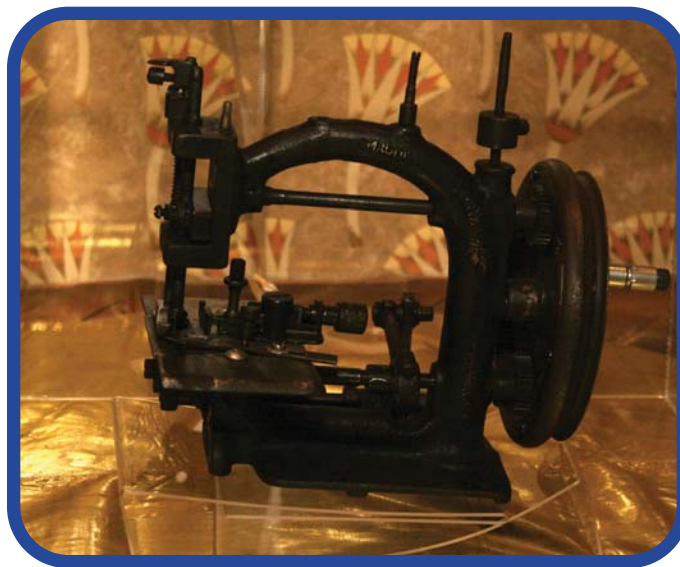


Quattro™ featuring InnovEye™ Technology

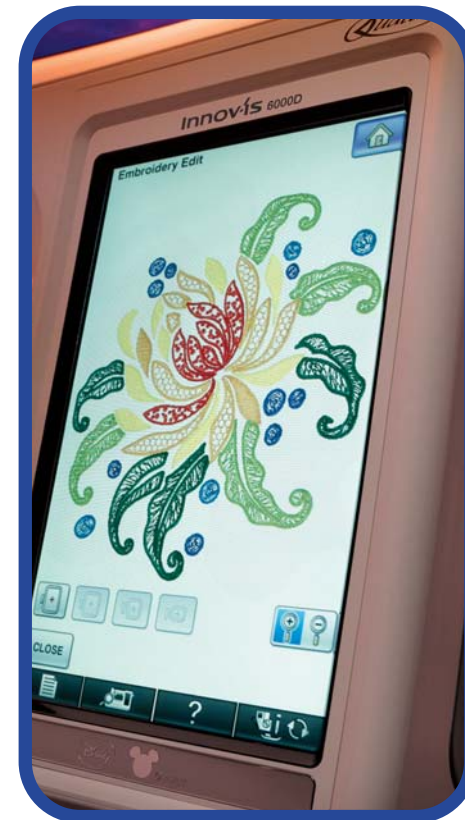
Dean F. Shulman, senior vice president of Brother International Corporation and head of the company's home appliance division, unveiled the new Quattro™ in a series of videos that can be viewed online at www.brotherquattro.com. "It's time to tell the truth," Shulman said, "and the truth is the Quattro™ sets a new standard in sewing, embroidery, quilting and crafting." Shulman introduced this machine as multi-functional, which he called Quattro™ Creativity Times Four™.

Dealers applauded the InnovEye™ Technology, user friendliness, processing speed and myriad other features that allow even novices to sew and craft at expert levels. The exclusive, first-in-the-industry InnovEye™ Technology and Up-

close™ Viewer give a bird's eye view of the needle area right on the high definition LCD display. The industry has demonstrated the ability to combine embroidery with pre-printed images, but now Brother's exclusive Print and Stitch™ Technology and InnovEye™ Technology allow precise embroidery placement onto the included built-in background designs. What is truly unique is that by using the sensor positioning sticker (known as the "snowman"), the InnovEye™ Technology automatically rotates the embroidery data for exact alignment and perfect precision and embroidery placement. Brother also demonstrated how the InnovEye™ Technology allows virtually hands-free edge sewing on both straight lines and gentle curves.



1928 chain-stitch sewing machine for the production of straw hats



LCD screen by Sharp Corporation

The Quattro™'s high definition LCD display made by Sharp Corporation is almost 14% larger than one competitor and 56% larger than another. It also has the widest viewing angle among its competitors. With more than 260,000 possible colors, it displays truer colors with no color shifting. Its workspace is 20% bigger than the leading competitor,

and Brother's exclusive Runway™ Lighting projects a light intensity equivalent in power to 56 standard LED lights and covers almost 10 inches of full-spectrum lighting around the needle.

Quattro™'s processing allows for no-wait rendering, which means almost instant viewing of designs and stitches. "Don't blink," Shulman cautioned, as he demonstrated the almost instantaneous rendering against two competitive models. Said Shulman, "I don't know of any other machine that can do this."

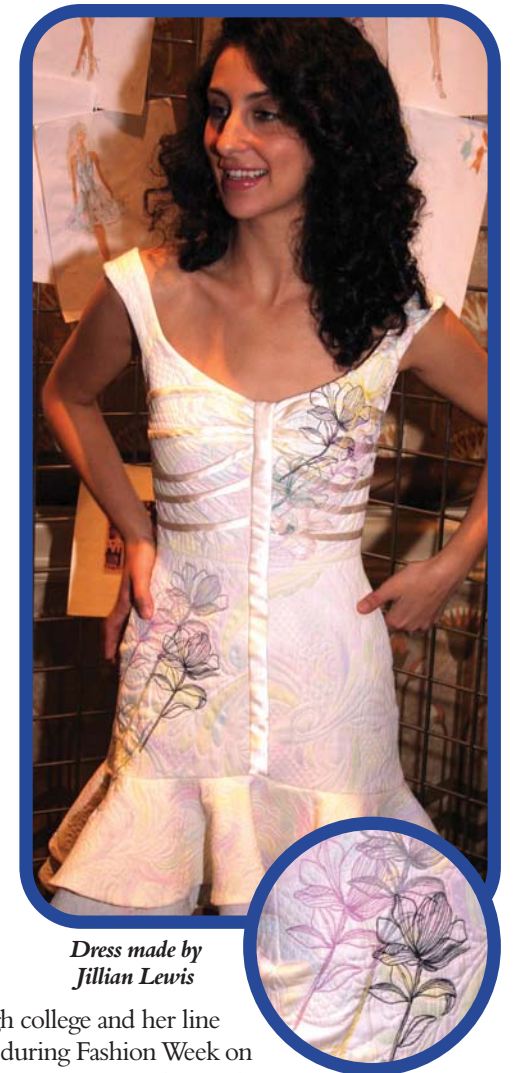
Dealer response to the new Quattro™ was succinct: It's a dream machine. "It's a major-league home run," said one leading dealer from the Southwest, who already had seven Quattro™ orders from customers who had watched the machine unveiling online at www.brotherquattro.com. "The Quattro™ is light years ahead of its competition. The InnovEye™ Technology is something that no other competitor can match," he said.

Quattro™'s leap of innovation is a fitting way to celebrate 100 years of ongoing sewing technology development, said Yoshihiro Yasui, grandson of Brother's founder, Kanekichi Yasui and a keynote speaker at the event. Brother Industries Ltd. made history 100 years ago, when it began as a family business offering

machine repair and then later, with its first sewing machine designed to chain-stitch straw hats, says Yasui. The debut of the Quattro™ honors that corporate century mark and the company's founding mission. Throughout the past century, the company's innovations have been driven by customers' needs and the desire to make sewing easier, more productive and more enjoyable, which is proven by the new innovative Quattro™.

Another guest keynote speaker was emerging fashion designer Jillian Lewis, one of three finalists of the hit fashion reality television show, "Project Runway" Season Four. Lewis spoke about how she learned to sew on her Brother Pacesetter 2300 sewing machine, which is the same machine that brought her though college and her line which was shown during Fashion Week on the finale of "Project Runway". The machine was purchased from a Brother Dealer on Long Island, with whom she still has a great relationship. Lewis explained how the presence of her Brother sewing machine helped her develop and realize her dream.

continued on next page



Dress made by Jillian Lewis