

The Versatile, Reversible Camisole

By **ANNA ZAPP**, Anna Zapp Designs

The reversible camisole is a perfect summer project. The time required for assembly is approximately four hours.

Camisoles can be a very versatile part of the wardrobe, simple and elegant, casual and fun. They can be the main attraction, an elegant subtle piece under a jacket, or just a comfortable top. They can be made in a myriad of fabrics including silks, rayons, light weight cottons, jersey knits, or linen.

It is a perfect pallet for decoration such as lace, beading or embroidery.

Supplies needed:

- 1 - Camisole pattern similar to Anna Zapp's, or Anna's pattern.
 - 2 - Two pieces of fabric that are compatible, or one piece of fabric and a matching lining. Yardage is specified on pattern.
 - 3 - Matching thread for both pieces of fabric.
 - 4 - Fusible straight tape.
-



Photo by Marie Bush
www.mariebush.com

Assemble The Front & Straps

1. Adjust the pattern for fit making any necessary changes. Cut all pieces. For the sake of these instructions we will call side "A" the dominate piece, or the side you will probably wear the most. Side "B" will be the lining side, or the inside, however this side can also be worn facing out.

The following instructions are for designed for a 1/4" seam allowance at the neckline, across the top of the back piece and on the straps. (If you want one side to roll out and create a tiny piping, add 1/8" to the pattern along the neckline and along the hem. This side should not be the side you fuse the tape to.)

2. On front and back pieces "A", fuse 3/8" straight tape to the neckline, along the front armhole, and across the back piece using this technique;

Fuse the tape only to the outer edge of each area, pressing about 1/8" deep. This will cause the tape to curve up slightly. Clip the inside tape edge 1/8" deep, then press in place. This allows the tape to contour to the curve of the armhole and neckline.





3. Press the strap edges under 1/4". Lay the two contrasting pieces together and edge stitch using matching thread on both sides. Press.

4. Pin and stitch the straps to the shoulders of camisole piece, A, (piece on which you have fused the tape) fabrics matching,

5. Lay the front pieces wrong sides together with side A facing up. Pin the armscye, the shoulder and the neckline to secure.

6. With the taped side up, stitch starting at the armhole, continuing up and across the shoulder, catching the strap, the neckline, and (being careful not to catch the straps except across the top edge). The side seams are open at this point.

7. Clip curves and center front very carefully. Turn inside out and press the neckline and armscye seam toward side B. (If you are not making the cami reversible, understitch as far as possible.)

8. Turn to the right side and press. If desired let the fabric from side B roll out slightly and press, giving a look of a tiny piping. (Side B will naturally roll toward the front.) It will not roll out at the "V", center front.



9. After pressing the neckline, turn the front inside out. Sew the hemline by starting at the side seam notch on the lower edge and continue to the notch on the other side.

10. Clip the notch all the way to the stitching. Trim the hemline seam to 3/8". Press the hemline seam as you did on the neck, or understitch.

11. Turn right sides out and press the seams.



Prepare The "B" (Or Lining) Back Piece

12. On the right hand side of back piece B, make two 5/8" deep clips, 6" apart and centered in the side seam. Fold the area between the clips back 5/8" (toward the right side of the fabric) and press.

Fitting

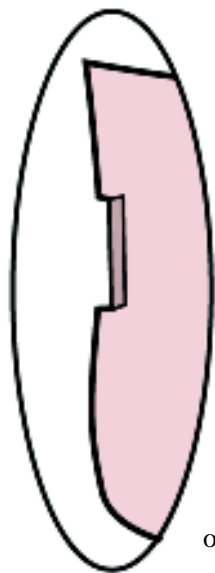
13. Pin the straps to the back piece, B, or lining. Baste the cami front side seams to the back piece to do a fitting thus determining the proper length of the straps.

14. Stitch the straps into place, slightly above the seamline. Take out the side seam basting stitches.

Make A Cami Sandwich

15. Lay the camisole back piece B, or lining, right side facing up on the cutting table.

16. Lay the finished front (side seams still open) on top of the back piece B, finished right side A facing up.



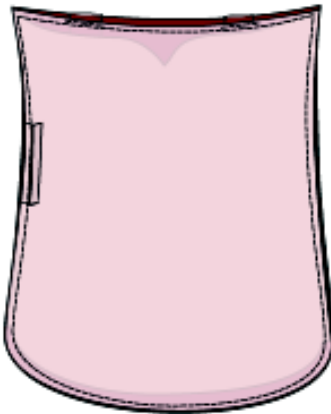
Continued on page 32

Reversible Camisole

Continued from page 23.

17. Lay the camisole back piece, A, right side down on top of cami front and pin all 4 layers in place.

18. Flip the entire piece over and begin stitching at the top of the open seam, where you turned and pressed the seam 5/8". (You are



basically sewing a bag around the finished front piece. The finished front will be hidden between the layers.)

19. Stitch along the side seam until you have reached the top of the cami armseye. (You can feel where the cami front begins.) Put your needle down, pivot and stitch across the top of the back piece, catching only the two camisole backs and straps.



20. When you reach the second side seam, put needle in down position, pivot and sew down the side seam, catching all 4 layers.

21. When you have reached the lower edge of the cami front, stitch the hemline, catching ONLY the two back pieces.

22. Stitch all the way up to the open seam in the back seam and stitch to the top of the clip, catching THREE layers only.

23. Reach through the hole and pull the camisole through, turning it right-side out. Press all edges.



24. Close the opening by hand stitching or edge stitching positioning the stitching line in the ditch on the opposite side. Press.

25. If you want to put a label in your reversible cami, crochet the label to the center back thus allowing it to be flipped to the inside. 🧶



Photo by Marie Bush
www.mariebush.com

ANNA ZAPP is the author of The Zapp Method of Couture Sewing by Krause. Her patterns "KIMONO" and "Reversible Camisole and Sampan Pants" can be purchased at www.annazappdesigns.com; anna@annazappdesigns.com.